

PREMIER EXHIBITIONS 

BODIES REVEALED

fascinating+real



OCT 3, 2015 - JAN 31, 2016

Board of Trustees

Officers

Mark H. Metcalfe, Chair
Don Gonzales, Vice Chair
J.J. Feik, Secretary
Jack Stein, Treasurer
Peggy W. Walker, Past Chair
Ryan Berg
Michael J. "Mike" Bolner
Sam Dawson
Walter Embrey
Ty Griesenbeck
Jack Judson
Kate Rogers

Trustees

Eddie Aldrete
Mary Arno
Craig Browning
John Edwards
Dirk Elmendorf
Betty Feldman
Bryan Grundhoefer
Jim Half
Esteban Lopez
Debbie Marino
Mary Margaret McAllen
Susan Moulton
Lynn Murphy
Ryan Pape
Justin Peeler
Richard Prior
Matt Proffitt
Manuel Quiñones
Lane Riggs
Edward Steves
Mary West Traylor
Jill Vassar
Elizabeth West
Reed Williams

Senior Staff

Marise McDermott
President & CEO

Bea Abercrombie
Vice President of Administrative Services

Thomas L. Adams, Ph.D.
Curator of Paleontology and Geology

Bryan Bayles, Ph.D.
Curator of Anthropology and Health

Kim Biffle
Vice President of External Affairs

Amy Fulkerson
Chief Curator

Linda Gerber
Director of Retail Services

Sue Millican
Chief Financial Officer

Sarita Rodríguez
Vice President of Public Programs

Heather Welder Russo
Vice President of Development

Bruce Shackelford
South Texas Heritage Curator

Harry Shafer, Ph.D.
Curator of Archeology

Mike Sprague
Vice President of Facilities

Ralph Voight
Vice President of Visitor Experience

Randall Webster
Vice President of Exhibitions

Katye Brought
Editor

Joseph Reyes
Designer

From the President...



Dear Members,

At long last, the Witte Museum is going up rather than coming down, which is a thrilling site to behold. In fact, you can watch the Mays Family Center rise each day on the Witte webcam on www.wittemuseum.org. Linbeck, is moving swiftly on the Mays Family Center to ensure that it will be ready to open May 14, 2016, for the blockbuster exhibition, *Maya: Hidden Worlds Revealed*. In the meantime, watch for progress on the entire Witte Museum campus.

Thank you all for your patience as the San Antonio Water System (SAWS) installed an enormous sewer line over the past five years at the same time as the Witte initiated construction. We appreciate your navigating over dirt roads and a dusty garage. We are so amazed at how many of you experienced the exhibitions and programs at the Witte Museum this summer and we are grateful for your loyalty.

We look forward to seeing you at the *Bodies Revealed* and *Wests of Texas* exhibitions this Fall, as well as the many great events happening, including the 45th Annual Game Dinner.

Since the Summer newsletter, we have been the recipients of generous gifts toward the New Witte once-in-a-hundred-years transformation. When the Mays Family Center opens in May, school children will begin their Witte adventure at the Feik Family Orientation Pavilion before experiencing 300 years of history in the Zachry Family Acequia Garden and walking through the Tex Elliott South Texas Heritage Entrance Court. The Mays Family Center also boasts a clear view from Broadway to the San Antonio River from the Dela White Broadway View Gallery and the Marie and Hugh Half Riverview Gallery. And finally, the Spring scene mural by Porfirio Salinas will have its new home in the Mays Family Center through the generosity of Barbara and George Williams.

As the new main building takes shape, you will soon enter the museum through the H-E-B Lantern, under the Nora and Steve Burkhart Quetzly the Quetzalcoatlus flying overhead and through the Ellen S. Quillin Arch named for the founder of the museum with help from the Frost Bank Charitable Foundation. The K. K. Amini Family along with Walter and Gayle Embrey have generously underwritten massive road cuts that will use the geological narrative to tie the together the story of Texas from millions of years to thousands to hundreds of years to today. Soon, visitors will be awed by the massive creatures that roamed this land now called Texas, including the Zachry Family T-Rex and the Steve and Marty Hixon *Quetzalcoatlus northropi*. In the McLean Family Texas Wild Gallery, more family creatures will be found on the Linda and Ed Whitacre South Texas Thornbrush and the Kelleher Foundation Trans Pecos dioramas. We are especially pleased to announce our recent partnership with the East Foundation to create a Land Stewardship Lab and to add messages about conservation and natural resources stewardship. Last but not least, the Kittie West Nelson Ferguson Gallery named by her daughter Kittie West will also include the Barbara and George Williams Rock Shelter Overlook, the Patty and Bob Hayes Habitation Shelter, the Nancy Smith Hurd Rock Art Lab and the Capital Group Companies Lifeways Outdoor Lab. We are grateful to the many generous donors who are committed to making the New Witte a reality. If you would like to participate, contact Heather Russo, VP of Development, at 210.357.1851. We would love to have you involved!

With your loyalty and support, the New Witte is without a doubt a catalyst for creating San Antonio as a City on the Rise, shaping the future of Texas.

Sincerely,

Marise McDermott
President & CEO



MISSION STATEMENT

The Witte Museum promotes lifelong learning through innovative exhibitions, programs and collections in natural history, science and South Texas heritage.

**Mays Family Center
for Exhibitions and Special Events**



AUG 18



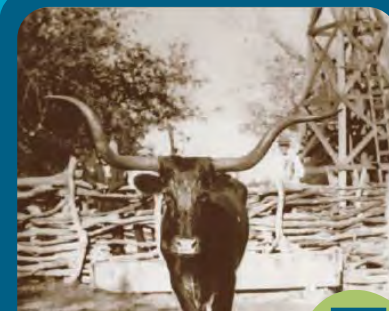
AUG 23



AUG 27



NEW WITTE CONSTRUCTION PROGRESS



Exhibitions

7



Events

9



Public Programs

11

CONTENTS

Calendar of Events



14

PREMIER EXHIBITIONS

BODIES REVEALED

fascinating+real

October 3, 2015 – January 31, 2016
\$8 Members, \$10 Non-Members, plus general admission

Bodies Revealed invites visitors to see the human body's inner beauty in educational and awe-inspiring ways. Come explore, experience and celebrate the wonder of the human form in person and discover how your body works.

Bodies Revealed features real human bodies donated for science education, and then preserved, dissected and respectfully and artistically displayed.

Bodies Revealed presents major systems of the body:

- Skeletal • Respiratory • Reproductive • Muscular
- Digestive • Nervous • Circulatory



Presented by

MASSAGE HEIGHTS
 body + face

Member Benefit!

Witte members always explore special exhibitions at discounted rates, making membership a great value! Members receive free museum general admission including the H-E-B Body Adventure and pay just \$8 per member for *Bodies Revealed*. That's a \$38 savings for a family of 4!

Members can reserve their discounted tickets for *Bodies Revealed* NOW! Visit www.WitteMuseum.org to buy tickets today!



After you experience *Bodies Revealed*, head over to the H-E-B Body Adventure Powered by University Health System to discover how to keep your body healthy through movement, healthy eating habits, meditation and more!

Bodies Revealed supplements the powerful H-E-B Body Adventure, the Witte's science center for hands-on interactive experiences, programs, and demonstrations on health and wellness.

Experience your own body in action at the H-E-B Body Adventure and then witness how the body moves through inside-the-body vistas of *Bodies Revealed*, an exhibition purposely chosen for the focus on active bodies in motion: on a bicycle, at bat and ready to run.



Bodies Revealed at the Witte Museum is presented by Massage Heights with generous support from Central Living by David Weekley Homes, Institute for Women's Health, and the City of San Antonio Department for Culture and Creative Development.

MAYA

HIDDEN WORLDS REVEALED® MUNDOS OCULTOS REVELADOS

In the BRAND NEW Mays Family Center
May 14 – September 5, 2016
\$8 Members, \$10 Non-Members, plus general admission

Maya: Hidden Worlds Revealed is the largest exhibition about the ancient Maya ever to be displayed in the United States. It uses a combination of hundreds of authentic artifacts, immersive environments, multimedia components, and hands-on activities to explore the rise and eventual decline of these fascinating ancient cities. It is designed to give visitors a glimpse at a cross-section of Maya life – from divine kings who ruled powerful cities to the artisans and laborers who formed the backbone of Maya society.

Visitors will see spectacular examples of Maya artistry made by masters of their craft, along with objects from everyday life. Get a close look at the scientific work being carried out at key Maya sites across Central America to understand exactly how experts know about the once-hidden Maya of the ancient past.

Artifact photos courtesy of the National Institute of Culture and History



Engage in hands-on explorations of building arches, deciphering hieroglyphs, drilling techniques, and translating a Maya calendar. Learn how contemporary Maya people maintain many cultural practices and beliefs that link them to their ancestors and take part in the process of discovery to learn how archeologists use science, technology and contemporary Maya voices to interpret the past.



Be among the first to host an event at the newest venue along the San Antonio River, the Mays Family Center and the Zachry Family Acequia Garden. The Mays Family Center will be perfect for galas, weddings and corporate banquets. Nearly 10,000 square feet inside can seat up to 800 in banquet style set ups. The large ballroom can hold stages and dance floors of various sizes depending on the needs of your event. State of the art technology will provide space for large projection screens and built in-house sound.

Rentals of the Mays Family Center are available October – April, beginning October 2016. To book a tour and to get more information, please call Kim Biffle, Vice President of External Affairs, at 210.357.1860 or email her at KimBiffle@WitteMuseum.org.

Members' Sneak Preview Day
Friday, May 13, 2016, 10 a.m. - 5 p.m.
Free Admission into exhibit!

Witte members will explore more blockbuster exhibitions than ever before with the Grand Opening of the Mays Family Center in May 2016! Members will enjoy a free sneak peek of *Maya: Hidden Worlds Revealed* a day before the general public sees it on May 14. Be the FIRST to explore the largest exhibition about the ancient Maya ever to be displayed in the United States.



Created by





The Wests of Texas: Cattle Ranching Entrepreneurs

September 18, 2015 - April 3, 2016
Russell Hill Rogers Texas Art Gallery

The Wests of Texas: Cattle Ranching Entrepreneurs opens September 18, as a follow up to the Witte Museum book of the same name published by Texas State Historical Association. See the remarkable story of how the West men and women helped saved the Texas economy by taking tens of thousands of cattle up the trail in the era after the Civil War. Curated by the book's author, Bruce M. Shackelford, South Texas Heritage Curator, the exhibit examines the Wests' contributions to Texas history. Original artifacts, paintings, documents and photographs, many featured in the book, will be exhibited. Most of the artifacts have never been seen by the public. The book is available for purchase in the Witte Museum Store.

The Wests of Texas: Cattle Ranching Entrepreneurs by Bruce M. Shackelford, South Texas Heritage Curator of the Witte Museum

The first printing of *The Wests of Texas: Cattle Ranching Entrepreneurs* sold out in 6 weeks, a record for Texas State Historical Association Press. The Witte Museum Store still has copies available.

Pick up your copy today!



L-R: Brian Bolinger, Texas State Historical Association Executive Officer, Marise McDermott, President and CEO of the Witte Museum, Bruce M. Shackelford, South Texas Heritage Curator of the Witte Museum

The Wests of Texas: Cattle Ranching Entrepreneurs is generously supported by the Koehler Foundation, Bank of America, N.A., Trustee, Richard and Mary West Traylor, the Dalkowitz Charitable Trust, Bank of America, N.A., Trustee, Charles Schreiner Nelson, Jr., Bill and Scarletta West, Patrick Burns, and Mr. and Mrs. George Mitchell West.

The South Texas Heritage Initiative at the Witte Museum is generously supported by Richard and Mary West Traylor, The Brown Foundation, Inc., Patrick Burns, and the William Knox Holt Foundation.



Spurs For Texas: Selections from the Leo Quintanilla Collection

September 18, 2015 thru April 3, 2016
Laura and Sam Dawson Gallery

A selection of spurs reflecting the various Texas spur traditions will be on display in the Dawson Gallery in the Robert J. and Helen C. Kleberg South Texas Heritage Center. The spurs, mostly made in Texas, are from the collection of Leo Quintanilla of Tilden and San Antonio, Texas. Mr. Quintanilla's spurs are examples worn by the working cowboys and vaqueros in South Texas.

Texas Spur made by Jesus Morales, Cotulla, Texas, 1930s
Courtesy of the Leo Quintanilla Collection

The South Texas Heritage Initiative at the Witte Museum is generously supported by Richard and Mary West Traylor, The Brown Foundation, Inc., Patrick Burns, and the William Knox Holt Foundation.

Splendor On The Range: American Indians and the Horse

March 3, 2016 - September 5, 2016

Kathleen and Curtis Gunn Gallery
\$3 Members, \$5 Non-members plus general admission

Splendor On The Range will examine the changes brought to the American Indian people who adapted the use of the horse after the animal was brought to North America by the Spanish. The exhibit will not only look at the plains tribes but also the tribes of the southwest both before and after the arrival of the horse.

Artifacts from the extensive collections of the Witte Museum will be exhibited, some for the first time. Saddles, bead decorated items, painted hides, clothing, weapons, and utilitarian goods such as baskets will be combined with vintage images and photos and maps to tell the stories of this dramatic period of change for the American Indian people who took up the horse and riding.

The South Texas Heritage Initiative at the Witte Museum is generously supported by Richard and Mary West Traylor, The Brown Foundation, Inc., Patrick Burns, and the William Knox Holt Foundation.

Kiowa Cradle, 1880s
Donated By Lee Hall



Presented by



Monday, October 19, 2015
6:00 to 10:30 p.m.
Brackenridge Park

Entertainment by
The Bellamy Brothers

Game Dinner Chairs:
Ginny and Randy
Cadwallader

The Witte is making an historic one time move and taking Game Dinner to Brackenridge Park during this year of transformation for the museum!



Printing Sponsor

Magazine Sponsor

Party Favor Sponsor

Grab your best western chic attire and join the Witte in celebrating the grandest traditions of South Texas. The event features a delicious array of wild game cuisine, auctions and a rousing live country music concert all to raise essential funds for the educational programs, operations and exhibitions of the Witte Museum.

The Witte Museum is grateful to have Wells Fargo as the Game Dinner presenting sponsor for fourteen straight years! "Wells Fargo is proud to again partner with the Witte Museum on the 45th annual Game Dinner. Through charitable contributions and the volunteer efforts of our team members, we share our success with our communities by being involved with causes and organizations that address vital community needs," said Mark Metcalfe, Wells Fargo Regional Vice President and Board of Trustees President, Witte Museum.

Reserve your table now, because they are going fast! Reserved tables for 10 guests are available for \$10,000, \$5,000 or \$3,000. Individual reservations are \$200 per person. Witte Society members reservations are \$150 per person, Quillin Sustainers receive two nontransferable \$100 reservations and Quillin Patrons and above receive two complimentary nontransferable reservations.

For more information call 210.357.1905 or email LaurenSmith@WitteMuseum.org.
Table and individual reservations can be purchased online at www.WitteMuseum.org.

Boone and Crockett Trophy Table Sponsors (as of August 25)

- Wells Fargo
- Accu-Print
- C&M Burns Ranching, LLC.
- KENS
- Ranch Hand
- Tex Elliott Family & El Bigote Ranch
- Texas Monthly
- Valero (2)

Boone and Crockett Big Game Table Sponsors

- Mary Hastings Arno & Peter W. Hollimon
- Arnold Investments, Ltd.
- BKD CPAs & Advisors
- C.H. Guenther & Son, Inc.
- Randy and Michele Cadwallader
- Jean Cheever
- Las Encinas Ranch
- The Gambrianus Company
- Gunn Automotive (2)
- Hagee Hospitality Group
- Tim and Karen Hixon
- Linbeck Construction
- Macho Creek Lodge
- Macy's
- Muy! (Pizza Hut)
- RC Page Construction, LLC
- The Scott Petty Foundation
- SWBC
- Silver Eagle Distributors

Boone and Crockett South Texas Outfitter Table Sponsors

- Ameqy Bank of Texas
- The Bank of San Antonio
- The Broadway San Antonio
- Broadway Bank
- Bolner's Fiesta Products (2)
- Bracewell & Giuliani
- The DeBerry Group
- Leonard and Laurie Deal
- Embrey Partners
- Feik Family
- Frost Bank
- Golden Steves Cohen & Gordon LLP
- H-E-B (3)
- Half Brothers Ranch
- JP Morgan
- Jack and Linde Judson
- Julian Gold
- Bonnie and John Korbell
- Langley & Banack, Inc.
- McPherson Family Foundation
- Sue Millican
- Mission Park Funeral Chapels & Cemeteries/ Steves & Sons
- NFA Wealth Management
- Padgett, Stratemann & Co., L.L.P.
- Rackspace
- Dr. Stephen F. Ramirez
- Southwestern Motor Transport, Inc.
- Vantage Bank
- Wells Fargo Commercial Banking Group
- West and Friends
- Weston Centre
- Whataburger Restaurants
- Wortham Insurance & Risk Management



Experience the Witte Museum after-hours in an evening event exclusively for adults (21 and older) that mix brews, conversation and innovative museum culture. Evenings will showcase unique experiences and include complimentary beer from Alamo Beer with food available for purchase. Leave the kids at home and meet friends or bring a date!

Admission: \$12 per person or two reservations for \$20
6:30 - 8:30 p.m.

For more information or to purchase tickets visit www.WitteMuseum.org or call 210.357.1910.

September 23 - Dig In!

Put on your hard hats and come dig up some fun at the Witte Museum! Come check out the latest on the Witte's transformation to a state-of-the-art museum in South Texas with a cold beer, hands-on activities, and more!

October 30 - Mad Science!

Calling all Mad Scientists! Immerse yourself in different experiments and try your hand at being a laboratory assistant while dancing the night away to some ghoulish good music. Whether you park your broom or wear a mask, dress up and come over. It will be a blast!



Second Sundays 3 - 5 p.m.

Sunday Jazz at the Witte returns for its 11th season! Join us on Second Sundays of the month and enjoy a relaxing afternoon listening to jazz under the pecan trees of the Will Smith Amphitheater. Food and beverages are available for purchase from Picante Grill.

Sunday Jazz at the Witte is presented in partnership with Trinity University's KRTU Jazz 91.7.



Blankets and lawn chairs welcome. In case of rain, we'll move indoors to the Prassel Auditorium. Museum galleries close at 5 p.m. Sunday Jazz at the Witte is included with museum general admission. Admission is free for Witte and KRTU members. Schedule is subject to change.

September 13 - The Richard Oppenheim Band
October 11 - Adrian Ruiz Quintet
November 8 - Regency Jazz Band



Smithsonian Affiliate

Smithsonian Affiliation News

The Witte's first year as a Smithsonian Affiliate has been an exciting one marked by growth opportunities for the institution, the staff and the community. In June, Shenna Hayden, the Witte's Manager of Public Programs, was selected to participate in the Smithsonian Affiliations Visiting Professional Program. Shenna spent two weeks visiting Smithsonian Institution museums in Washington, D.C., and working with experts there as she explored possibilities for the Witte's own programs, especially Gallery Theater. The Public Programs Department also welcomed an intern, area high school student Pascual Callejas, as part of the Smithsonian Latino Center's Young Ambassadors Program.



BIRTHDAY PARTY PACKAGES



BIRTHDAY PARTIES LIKE NEVER BEFORE

Host your birthday party at the Witte Museum and let your child's imagination soar with our different party packages!

WITTE BIRTHDAY PARTY SPECTACULAR

Daytime Parties (starts at \$210 for Members/\$285 for Non-Members)

- The use of a private party room for two (2) hours
- Admission for thirty (30) guests to the Witte Museum, H-E-B Body Adventure and the South Texas Heritage Center
- A Birthday Party Coordinator on-site to check you into your party room and greet your guests
- A special Witte drawstring bag for the Birthday Child
- Party guests 12 years and younger will receive a collectible Witte pencil

H-E-B BODY ADVENTURE: MINI CHEFS AFTER-HOURS BIRTHDAY PARTY

Exclusive After-Hour Party Package (starts at \$500)

With a dash of laughter and a sprinkle of fun we are cooking up a recipe for a yummy good time! Children will take their celebration to the next level when they tie back their hair and roll up their sleeves!

- Admission for 60 guests and two (2) hours of private after-hour use of the H-E-B Body Adventure
- Access to H-E-Buddy SkyCycle® and Mt. Witte Climbing Wall (for an additional charge)
- A Birthday Party Coordinator on site to check you into your party room and greet your guests
- A special Witte drawstring bag for the Birthday Child
- Mini Chef activities for up to thirty (30) children (ages 12 years and younger):
 - Guided hands-on children's cooking class in the Demo Kitchen
 - Children will learn how to safely create a healthy masterpiece they can eat
 - A souvenir apron to wear and take home



Make your child's birthday a celebration to remember!

Visit www.WitteMuseum.org for a full list of rates and guidelines or call 210.357.1866 to book your party.

4TH ANNUAL
BOOT SCOOT &
5K RUN



Witte Museum promotes healthy living at the 4th Annual Boot Scoot and 5K!

University Health System

Thank you to our generous sponsors!



Frost Bank • Whataburger • XPEL • Brown and Ortiz PC • Craig Browning Realtor®
Hornberger Sheehan Fuller & Garza, Inc. • Law Office of Lisa S. Miller
Paul Garcia & Associates / Krishna Reddy • RABA-KISTNER, INC • Sendero Wealth Management
Silver Eagle Distributors • The Princeton Review



Free Tuesday Family Fun

H-E-B Read Aloud
September 15, October 20, November 17 and December 15
3 - 5 p.m.

Join H-E-Buddy and San Antonio Youth Literacy for a Read 3 Read Aloud and receive a free children's book!

Free Tuesdays are generously supported by Bolner's Fiesta Products, Inc., BBVA Compass, Macy's, and NFA Wealth Management.

Night at the Witte

Ever wanted to spend the night in a museum? Bring your flashlight and explore the world of Science, Natural History, South Texas Heritage and Health and Wellness at the Witte after hours! Night at the Witte programs include special exhibition tours and hands-on activities led by Witte staff.

Cost is \$45 per child; \$20 per adult or a minimum of \$1,800 per program.
Minimum of 40 participants with one chaperone per 10 participants. Combined groups and families are welcome!

For details and program dates call 210.357.1901 or email ShennaHayden@WitteMuseum.org.

The Louis A. and Frances B. Wagner Series

Join us for these engaging and interactive presentations for everyone.

Culinary Medicine

Wednesday, September 30
6:30 - 8:30 p.m.

How can timeless culinary traditions revolutionize modern medicine? Does the family kitchen hold the key to a healthier lifestyle? Explore these topics and more when you gather around tables in the Children's Hospital of San Antonio™ Demonstration Kitchen at the Witte's H-E-B Body Adventure for an evening of tasty fun and learning. Chef Maria Palma and dietician Celina Paras of the Children's Hospital's innovative new Culinary Health Education for Families (CHEF) program will join experts in public health to discuss the role of culinary medicine and demonstrate how to make a family-style meal that is nutritious, delicious and budget-friendly.

Suggested donation is \$5 for members and students, \$10 for adults. Reservations required. Please call 210.357.1910 for reservations.

Biotech Breakthroughs Revealed!

Wednesday, November 4
6:30 - 8:30 p.m.

From wearable fitness trackers to 3D-printed prosthetics, implants and tissues, biotechnology is changing the shape of health and wellness. The *Bodies Revealed* exhibit at the Witte offers an unprecedented opportunity to explore human anatomy, providing insights into how the incredible structures and systems of the body function and how lifestyle choices and medical science come together to affect healthy changes every day. Join Curator of Anthropology and Health, Dr. Bryan Bayles, and special guests including pioneers from San Antonio's biotech industry, to delve into a discussion of the history and future of scientific breakthroughs that both empower and heal.

Suggested donation for the presentation is \$5 for members and students, \$10 for adults. Enjoy a special after-hours viewing of the *Bodies Revealed* exhibit for the members' price of \$8. Please call 210.356.1910 to reserve your spot.

The Louis A. and Frances B. Wagner Series is generously supported by the Louis A. and Frances B. Wagner Lecture Series Fund.

Discover More This Fall at the Witte



The Unforeseen
Sunday, October 4
2 - 4:30 p.m.
Included with general admission

Join us for a screening of a documentary about the tension between environmental concerns and land development interests in the struggle over Austin's beloved Barton Springs. This program is a collaboration with the University of the Incarnate Word as part of a film series leading up to the premiere of the *Where Rivers Meet* project.

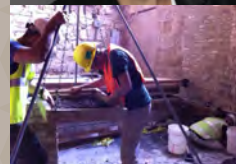
The Unforeseen movie screening is cosponsored by Green Spaces Alliance.



Currents in Texas Archaeology Symposium
Friday, October 9
6:30 p.m. - 8:30 p.m.

The symposium will feature scholarly sessions exploring the recent Plaza de Armas excavations with Clint McKenzie, Project Archaeologist for the UTSA Center for Archaeological Research, and current archaeological investigations associated with the Witte's construction and expansion with Dr. Nesta Anderson, Senior Archaeologist with Pape-Dawson Engineers, Inc. Artifacts from the Plaza de Armas excavation will be available for viewing at the symposium.

To place your reservation, or for more information, please call 210.357.1910 or email ShennaHayden@WitteMuseum.org. Light refreshments will be served.



Book Signing: The Train to Crystal City
by Jan Jarboe Russell
Thursday, November 5
6:30 - 8:30 p.m.

Join San Antonio author Jan Jarboe Russell for a special book-signing event in honor of her *New York Times* bestselling book, *The Train to Crystal City*. The book explores the dramatic, little-known story of a secret FDR-approved American internment camp in Texas during World War II.

Suggested donation is \$5 for members and students, \$10 for adults.

La Tamalada
Saturday, December 5
11 a.m. - 1 p.m.

It's not a South Texas Holiday season without tamales! Enjoy the art of making your own tamales with the seasoned guidance of Comadre Gloria Solis. Participants will create their own half-dozen bean tamales to eat for lunch or take home and share!

\$15 for members/ \$25 for non-members
Maximum 40 participants
Please call 210.357.1910 for reservations

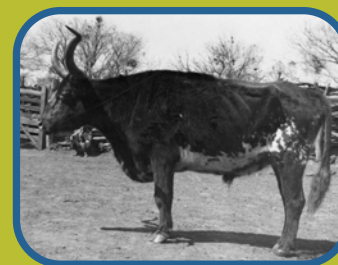


SATURDAY FAMILY DAYS



Fun-filled Saturday afternoons at the Witte are where you want to be this fall! Explore, discover, ask and learn from curators, historians and scientists. Join us!

Family Days are included with general admission



Time Travel Saturday
The Wests of Texas
Saturday, September 19
Noon - 4 p.m.

Do you want to be a cowboy or cowgirl? You'll have to learn a few things first. A good cowhand must know how to rope and ride. Can you saddle a horse? Have you branded a maverick? Have you eaten straight from the chuckbox? Join Bandera on the Road and try your hand at these basic cowboy tasks and see if you have what it takes to join the West family on a trail drive in 1800's Texas. Don't miss the exhibit *The Wests of Texas: Cattle Ranching Entrepreneurs* to learn more about this important South Texas family!



STEM Saturday
Archaeology!
Saturday, October 10
Noon - 4 p.m.

Experiment with archaeology at the Witte Museum! Excavate artifacts at our mock dig, try your hand at ancient rock art like the People of the Pecos, use Lego® blocks to construct your own archaeological site and experience a taste of ancient Mayan culture in anticipation of the exhibit *Maya: Hidden Worlds Revealed* coming to the Witte on May 14, 2016. Join us and our many community partners for this exciting day of hands-on learning and discovery.



STEM Family Day
Bodies Revealed
Saturday, November 14
Noon-4 p.m.

Explore the wonder of the human body inside and out through the awe-inspiring *Bodies Revealed* exhibition and boost your health IQ with a visit to the H-E-B Body Adventure. Enjoy a fun-filled day of activities for the whole family and discover how small steps can add up to a lifetime of health and wellness.



Time Travel Saturday
South Texas Holiday Traditions
Saturday, December 5
Noon - 4 p.m.

How do you celebrate the holidays with your family? Experiment with photography, create homemade ornaments, and gather round for story time! Enjoy hot chocolate and Christmas cookies during a performance of *Los Pastores* in the Will Smith Amphitheater. This 30 minute play tells us the story of the shepherds' journey to see the baby Jesus. Come celebrate with us and make it *your* new family tradition!

STEM Saturdays are generously supported by The Boeing Company.

Family Days are generously supported by the City of San Antonio Department for Culture and Creative Development.

MEMBER BENEFITS



Members' Holiday Party

Wednesday, December 2, 6 - 8 p.m.

Celebrate the season of giving with fellow Witte members at the annual Witte Museum Member holiday party. Family-friendly activities, festive music, and holiday treats make this event a member favorite! The Witte Museum will also be collecting non-perishable food items for the San Antonio Food Bank during the event, so please bring one item per person to help families in need during the holidays. For more information, call 210.357.1863 or email Membership@WitteMuseum.org.



The Gift of Membership

Give the gift of a Witte membership this holiday season and show your loved ones you care all year long. You know firsthand all the benefits of a Witte membership, and now you can share these good times with others. A Witte gift membership provides a full year of free general admission, including members' only festivities for the Mays Family Center for Exhibitions and Special Events opening May 14, 2016 with *Maya: Hidden Worlds Revealed*. Your holiday shopping just got easier! Gift memberships can be purchased at the Witte Museum Admissions Desk, by calling 210.357.1863, or online at www.WitteMuseum.org.



The Museum Store

Members receive 20% off at the Museum Store starting November 27 - December 25, 2015. Do your holiday shopping at the Witte!



Soar with Us
Exclusive and Unparalleled Access
Through the Quillin Society



Wests of Texas Reception

Quillin Society members celebrated the release of *The Wests of Texas: Cattle Ranching Entrepreneurs* by Bruce M. Shackelford, noted author and Witte Museum South Texas Heritage Curator.



Can You Dig It? Behind the Fence Bash

Quillin Society members delighted in exclusive behind the scenes tours of construction and updates on New Witte progress. Quillins were invited to "make their mark" on the Witte for generations to come, signing their names on pillars in what will be the new McLean Family Texas Wild Gallery.



For more information on the Quillin Society and how to get involved, please contact Alexandra Barrett, Annual Fund Officer, at 210.357.1922 or AlexandraBarrett@WitteMuseum.org

SEPTEMBER

September 9, 6:30 - 8:30 p.m.
Salud! Culinary Nights
H-E-B Body Adventure
\$45 members, \$50 per person
Includes souvenir wine glass
Call 210.357.1910 for reservations

September 13, 3 - 5 p.m.
Sunday Jazz at the Witte
Will Smith Amphitheater
Included with museum admission

September 15, 3 - 5 p.m.
H-E-B Read Aloud
Witte Campus

September 18, 2015 - April 3, 2016
The Wests of Texas: Cattle Ranching Entrepreneurs
Russell Hill Rogers Texas Art Gallery
Included with museum admission

September 18, 2015 - April 3, 2016
Spurs for Texas: Selections from the Leo Quintanilla Collection
Laura and Sam Dawson Gallery
Included with museum admission

September 19, Noon - 4 p.m.
Time Travel Saturday
The Wests of Texas
Witte Campus
Included with museum admission

September 23, 6:30 - 8:30 p.m.
Cocktails & Culture
Dig In!
\$12 per person or two reservations for \$20
Call 210.357.1910 for reservations

September 30, 6:30 - 8:30 p.m.
Louis A. and Frances B. Wagner Series
Culinary Medicine
Suggested donation \$5 members and students; \$10 adults
Call 210.357.1910 for reservations

OCTOBER

October 3, 2015 - January 31, 2016
Bodies Revealed
Kathleen and Curtis Gunn Gallery
\$8 members, \$10 non-members,
plus general admission

October 4, 2 - 4:30 p.m.
The Unforeseen Movie Screening
Witte Campus
Included with museum admission

October 9, 6:30 - 8:30 p.m.
Currents in Texas Archaeology Symposium
Witte Campus
Included with museum admissions

October 10, Noon - 4 p.m.
STEM Saturday
Archaeology!
Witte Campus
Included with museum admission

October 11, 3 - 5 p.m.
Sunday Jazz at the Witte
Will Smith Amphitheater
Included with museum admission

October 19, 2015
45th Annual Witte Game Dinner
Keep Texas Wild
Visit WitteMuseum.org for reservations
For more information call 210.357.1905
or email LaurenSmith@WitteMuseum.org

October 20, 3 - 5 p.m.
H-E-B Read Aloud
Witte Campus

October 30, 6:30 - 8:30 p.m.
Cocktails & Culture
Mad Science!
\$12 per person or two reservations for \$20
Call 210.357.1910 for reservations

CALENDAR OF EVENTS

NOVEMBER

November 4, 6:30 - 8:30 p.m.
Louis A. and Frances B. Wagner Series
Biotech Breakthroughs Revealed!
Suggested donation \$5 members and students; \$10 adults
Call 210.357.1910 for reservations

November 5, 6:30 - 8:30 p.m.
Book Signing: The Train to Crystal City
Witte Campus

November 8, 3 - 5 p.m.
Sunday Jazz at the Witte
Will Smith Amphitheater
Included with museum admission

November 11, 6:30 - 8:30 p.m.
Salud! Culinary Nights
H-E-B Body Adventure
\$45 members, \$50 per person
Includes souvenir wine glass
Call 210.357.1910 for reservations

November 14, Noon - 4 p.m.
STEM Saturday
Bodies Revealed
Witte Campus
Included with museum admission

November 17, 3 - 5 p.m.
H-E-B Read Aloud
Witte Campus

DECEMBER

December 2, 6 - 8 p.m.
Members' Holiday Party
For more information call 210.357.1863
or email Membership@WitteMuseum.org

December 5, 11 a.m. - 1 p.m.
La Tamalada
H-E-B Body Adventure
\$15 members, \$25 non-members
Call 210.357.1910 for reservations

December 5, Noon - 4 p.m.
Time Travel Saturday
South Texas Holiday Traditions
Witte Campus
Included with museum admission

December 15, 3 - 5 p.m.
H-E-B Read Aloud
Witte Campus

Team Member Spotlight



Adam Mazuca
Director of Visitor Services

How long have you worked at the Witte Museum?

I have been with the Witte a little over 7 years now. I came on board in 2008 as a Visitor Associate and during my time here have assisted with nearly all the departments in various ways. Over the years I was fortunate enough to be given the opportunity to advance in position and grow more as an individual and professional.

What is your favorite part of your job?

For me it is both the people that I get to meet and converse with as well as the staff I get to work along with that are my favorite parts of the job. I have met some very interesting and great people from right here in SA to folks from as far away as Germany, Russia, Japan, and even Australia. The staff here is great, we really do have a strong working relationship with one another and help make this place not only fantastic for our visitors but each other as well. When we say Witte family we are not kidding, we really are a tight knit group.

What about the New Witte transformation are you most excited for?

The Valero Great Hall and new Dinosaur Gallery is what I am most excited for in the New Witte transformation. The Valero Great Hall entrance just draws you in and is the introduction for the museum of lifelong learning in our community. As with the Dinosaur Gallery I think that section speaks to everybody's inner child-like fascination with the great animals of the past. Just seeing the flyover video and designs for both sections does not do justice as to just how spectacular those areas are going to be not only for the visitors but for San Antonio as well.

What is your favorite part of the Witte Museum?

Currently my favorite part of the museum is the South Texas Heritage Center. The building helps illustrate the unique events that took place that built and contributed to what South Texas is today. The interactive screens and presentations just add to the overall effect of the building. The view looking out towards the river and campus helps one appreciate the natural beauty of our area. With this and the experience provided by the building make this building my favorite spot on the museum campus.



3801 Broadway
San Antonio, Texas 78209

Contact Us
General Information:
210.357.1900

Group Reservations:
210.357.1910

Event Rentals:
210.357.1866

Membership:
210.357.1863

Keep up with everything
happening at the Witte!

www.WitteMuseum.org



Find us on
Facebook



Instagram *Pinterest*

NON-PROFIT
ORGANIZATION
U.S. POSTAGE
PAID
PERMIT #1506
S.A.T.X.

The Witte Museum's Public Programs are supported in part by grants from The Will Smith Charitable Foundation, the Tesoro Foundation, The Boeing Company, the Capital Group Companies Charitable Foundation, the William Knox Holt Foundation, and Rackspace Hosting. South Texas Heritage Educational Programming is generously supported by Richard and Mary West Traylor. Scholarship support is provided by the William Knox Holt Foundation, Rackspace Hosting, the Witte Society's Fund a Field Trip Campaign, Nora and Steve Burkhart, Richard and Mary West Traylor, Julie and Justin Peeler, Mr. and Mrs. A.R. Dooley, Jr., and History Heroes. H-E-B Body Adventure operations are generously supported by the Saint Susie Charitable Foundation.

The Witte Museum also receives general operational support from the City of San Antonio Department for Culture and Creative Development, the Albert and Bessie Mae Kronkosky Charitable Foundation, the George and Fay Young Foundation, H-E-B, the USAA Foundation, the Edouard Foundation, the Bank of America Foundation, the Brown Foundation Inc., the Parker Foundation, the O'Conner & Hewitt Foundation, the George Weldon Sheffield Fund of the San Antonio Area Foundation, the Victor and Peggy Creighton Charitable Trust, the Carol Lee Jones Educational and Cultural Fund of the San Antonio Area Foundation, the Harris K. and Lois G. Oppenheimer Foundation, the Graham B. and Anne E. Knight Fund and the Orsinger Family Trust of the San Antonio Area Foundation, and the Edwin M. Jones Foundation, Inc. *Free Tuesdays* are generously supported by Bolner's Fiesta Products, Inc., BBVA Compass, Macy's, and NFA Wealth Management.



Photo Courtesy of
Bend the Light Photography



Engage your guests with a reception and private viewing of *Bodies Revealed*. When you book an event rental, you will receive a special discounted group rate to the exhibition. For more information, call the Museum Event Rentals Department at 210.357.1866 or visit www.WitteMuseum.org

Bodies Revealed provides a vista of the human body's inner beauty in educational and awe-inspiring ways. Come explore, experience and celebrate human anatomy in an unparalleled exhibition that uncovers the wonder of the human form. *Bodies Revealed* features real human bodies donated for science education, and then preserved, dissected and respectfully and artistically displayed.