



**Board of Trustees**

**Officers**

Don Gonzales, Chair  
J.J. Feik, Vice Chair  
Ryan Berg, Secretary  
Jack Stein, Treasurer  
Mark H. Metcalfe, Past Chair  
Peggy W. Walker  
Walter Embrey  
Jack Judson  
Deborah Gray Marino  
Eddie Aldrete  
Dirk Elmendorf  
Michael "Mike" Bolner  
Kate Rogers  
Sonya Medina Williams

**Trustees**

Mary Arno  
Craig Browning  
Heather Chandler  
David Dunham  
Anthony Edwards  
John Edwards  
Betty Feldman  
Bryan Grundhoefer  
Jim Halff  
Esteban Lopez  
Mary Margaret McAllen  
Susan Moulton  
Lynn Murphy  
Ryan Pape  
Richard Prior  
Matt Proffitt  
Manual Quinones  
Lane Riggs  
Edward Steves  
Jesse Travis  
Mary West Traylor  
Jill Vassar  
Elizabeth West  
Reed Williams

**Senior Staff**

Marise McDermott  
President & CEO

Bea Abercrombie  
Vice President of Administrative Services

Thomas L. Adams, Ph.D.  
Curator of Paleontology and Geology

Bryan Bayles, Ph.D.  
Curator of Anthropology and Health

Kim Biffle  
Vice President of External Affairs

Amy Fulkerson  
Chief Curator

Linda Gerber  
Director of Retail Services

Jeff Goldblatt  
Vice President of Marketing

Sue Millican  
Chief Financial Officer

Sarita Rodriguez  
Vice President of Public Programs

Heather Welder Russo  
Vice President of Development

Bruce Shackelford  
South Texas Heritage Curator

Harry Shafer, Ph.D.  
Curator of Archeology

Mike Sprague  
Vice President of Facilities

Ralph Voigt  
Vice President of Visitor Experience

Randall Webster  
Vice President of Exhibitions

Katye Brought  
Editor

Joseph Reyes  
Designer

# From the President...



Dear Members,

Every day stands for lifelong learning at the Witte, as we execute the vision of many years of carefully crafted planning and strategy led by the Witte Senior Management Team. Your New Witte is taking shape in the form of architecture and astonishing exhibitions which will place the Witte in the promised Top Tier category among museums worldwide. In what the exhibition team calls the "war room", curators and designers hash out refined concepts and associated designs, and marshal armies of 3-D animators, designers, media producers, diorama fabricators, taxidermists, graphic artists and a myriad of other specialists. Heading these armies is Vice President of Exhibitions Randall Webster, motivating all of us to finish research and reviews.

We have been inspired by the global exhibitions of the Perot Museum of Nature and Science in Dallas and the Houston Museum of Natural Science with new dinosaurs from China and the Arctic and animals and gems from throughout the world. Unlike those two great museums, your New Witte will be great in another way: unabashedly Texan, with the power of a narrative spanning Texas Deep Time, stretching from the dinosaurs which roamed your neighborhood, the hunter gatherers of this region, the animals and plants of Texas, and in this decade, the Texas focus on body and mind, health and wellness.

Paleontologist and Geologist Dr. Thomas Adams weaves a tale about the prehistoric creatures of millions of years ago and now, with the skill of 3-D animators and artists and fabricators, the dinosaurs are coming alive. Anthropologist Dr. Harry Shafer carefully considers the scenes of hunter gatherers, as they hunch over their carvings and matting, and create beautiful artwork on 3-D rock walls illuminating their cosmology. Naturalist Helen Holdsworth visualizes animals and plants to be placed on seasonally specific and massive new dioramas of Texas Wild. Chief Curator Amy Fulkerson works with her team of collections specialists to prepare the thousands of artifacts for the New Witte. These are the curators for the new exhibitions opening in 2017, but to ensure that the entire Witte Museum is well integrated, South Texas Curator Bruce Shackelford and H-E-B Body Adventure Curator Dr. Bryan Bayles are working shoulder to shoulder with the team, weaving the Texas Deep Time narrative in all that we achieve.

As we expand the narrative of the Witte, we have a special exhibition for you to experience starting in March. *Splendor on the Range: American Indians and the Horse*, is being curated by Bruce Shackelford, whose expertise in these areas is tops in the field. In the 1990s, Bruce curated the exhibition, *Thundering Hooves: 500 Years of Horse Culture in the Americas*, which traveled nationwide for two years. To underscore the importance of the Witte Museum collection, Bruce chose the year of the New Witte to debut an ever-growing collection of prehistoric and historic American Indian and horse culture artifacts.

During the life of this newsletter, we will prepare for the opening of the Mays Family Center with celebrations and its debut exhibition, *Maya: Hidden Worlds Revealed*. The slab will be poured for the magnificent Valero Great Hall, and steel will rise. We will also begin installing the rock work of the dioramas for the dinosaurs, shelters, and ecological zones for the Naylor Dinosaur Gallery, McLean Family Texas Wild Gallery and the Kittie West Nelson Ferguson People of the Pecos Gallery.

Please come to witness the rising of the New Witte. We look forward to seeing you on the Range and the San Antonio River this winter and spring.

Sincerely,

Marise McDermott  
President & CEO



**MISSION STATEMENT**

The Witte Museum promotes lifelong learning through innovative exhibitions, programs and collections in natural history, science and South Texas heritage.

# Dinosaurs are Back at the Witte! Thanks to Susan Moulton and her \$4 million gift.



Susan Moulton, Trustee of the Witte Museum and President of the Will Smith Foundation was joined by Don Gonzales, Chair of the Witte Museum Board of Trustees, to celebrate her transformation gift of \$4 million to build the Witte's first ever, Dinosaur Gallery opening Spring 2017.



Ron Nirenberg, San Antonio Councilman, addresses the crowd.



TexRex, a New Witte Museum mascot, made his debut at the event and is already a big hit!



Dr. Thomas Adams, Curator of Paleontology and Geology, gives a tour of the New Witte renovations to media.

**Exhibitions 3**

**Events 8**

**Public Programs 11**

**CONTENTS**

**Calendar of Events 18**



# Splendor on the Range:



## American Indians and the Horse



Presented by



**March 5 – August 21, 2016**

\$3 Members, \$5 Non-Members, plus general admission

*Splendor on the Range* explores how life changed for American Indians after the Spanish brought the horse to North America in the 1500s. This fascinating exhibition, curated by Bruce Shackelford, looks at the culture and lifeways of tribes throughout the Plains and the Southwest before and after the arrival of the horse. Experience this original, interactive Witte exhibit featuring a stunning array of artifacts from the museum's unparalleled Native American collection.

*Splendor on the Range: American Indians and the Horse*  
is presented by PlainsCapital Bank  
and generously supported by the City of San Antonio  
Department for Culture and Creative Development.

Go deeper into the story of *Splendor on the Range*  
with special programs for the whole family.

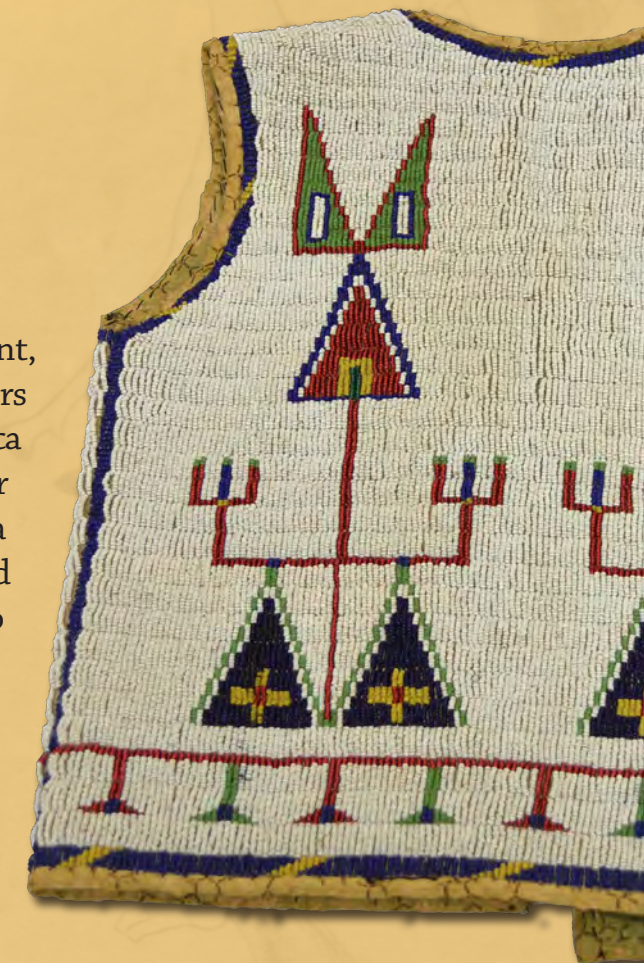
### The Fort Parker Raid Revisited

Wednesday, March 30

6:30 - 8:30 p.m.

Investigate the story of one of the most well-known and violent, historic encounters between American Indians and white settlers in Texas history. How did the advent of the horse in North America contribute to that violence? Join Dr. Daniel Gelo, Professor and Dean in the Department of Anthropology at UTSA, for a fascinating examination of what really happened at the famous Fort Parker Raid and stay to explore the exhibit, *Splendor on the Range: American Indians and the Horse* with Dr. Gelo and Witte South Texas Heritage Curator, Bruce Shackelford.

Suggested donation for the Wagner Series is \$5 for members and students, \$10 for adults. Reservations required. Please call 210.357.1910 for reservations.



Experience *Splendor on the Range*  
this spring at Witte Museum Camp  
• see PAGE 14 for details •

**Members Opening Weekend**  
**Saturday, March 5 – Sunday, March 6, 2016**

Members enjoy FREE admission to the  
exhibition on opening weekend!

Saturday, March 5,  
10 a.m. – Noon  
Hands-on, family-friendly  
activities for members only!  
Call 210.357.1863 for more information.

Members can reserve their  
discounted tickets for  
*Splendor on the Range* NOW!  
Visit [www.WitteMuseum.org](http://www.WitteMuseum.org)  
to buy tickets today!



# MAYA

HIDDEN WORLDS REVEALED.  
MUNDOS OCULTOS REVELADOS



## In the NEW Mays Family Center

May 14 – September 5, 2016

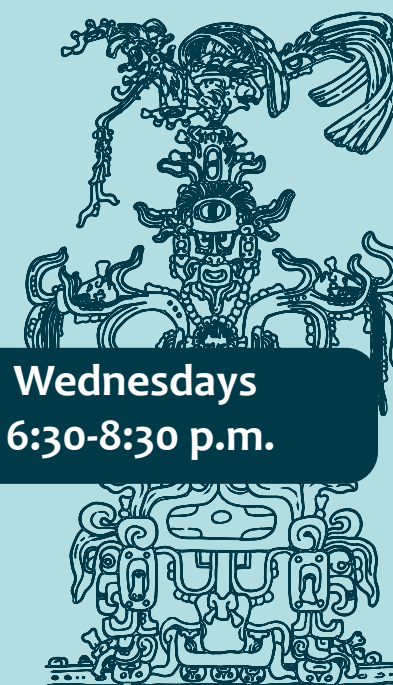
\$8 Members, \$10 Non-Members, plus general admission

They're one of the most sophisticated and powerful civilizations of all time. They invented calendar and mathematical systems of remarkable precision and accuracy well before the advent of the atomic clock. And they discovered the delicious allure of the cacao bean long before we ever turned it into chocolate bars. These ancient accomplishments just begin to scratch the surface as to how the Maya have deeply impacted society today. And now the mysteries of the Maya are being unlocked in ways never imagined, which has made this civilization more relatable, vibrant, and relevant than ever before.



Maya: Hidden Worlds Revealed is generously supported by the Orr Family Foundation and the City of San Antonio Department for Culture and Creative Development. The Mind of the Maya Series is presented by The Orr Family Foundation.

For the first time, archaeologists are sharing the secrets about this fascinating society in a singular and unforgettable museum experience. *Maya: Hidden Worlds Revealed* is the largest traveling exhibition about the Maya ever to be toured in the United States. It uses a combination of authentic artifacts along with multimedia and interactive, hands-on activities to reveal our deep ties to this astonishing civilization. This is the Texas premier of this unprecedented exhibition.



Wednesdays  
6:30-8:30 p.m.

### Meet the Maya

April 27  
An introduction to the world of rich culture and deep intrigue, join Maya scholars Kathryn Brown, PhD and Jason Yaeger, PhD from the University of Texas at San Antonio to learn more about the Maya world and *Maya: Hidden Worlds Revealed*.

### Making Meaning

May 18  
David Stuart, renowned Maya archaeologist and epigrapher, and director of the Mesoamerica Institute at the University of Texas at Austin explores the cosmology and hieroglyphs of the ancient Maya.

## The Mind of the Maya Series

Presented by the Orr Family Foundation

Immerse yourself in the world of the Maya! Explore the world through the eyes of these ancient architects, astronomers and artisans, and discover how this dynamic culture continues to thrive. Join Maya scholars and Witte curators for this special series of presentations that complement the incredible exhibit, *Maya: Hidden Worlds Revealed*, in the new Mays Family Center.

Experience the Mind of the Maya Series AND enjoy *Maya: Hidden Worlds Revealed*

Includes exhibit admission to *Maya Hidden Worlds Revealed*! \*

Members: \$16

Adults: \$20

Students: \$10

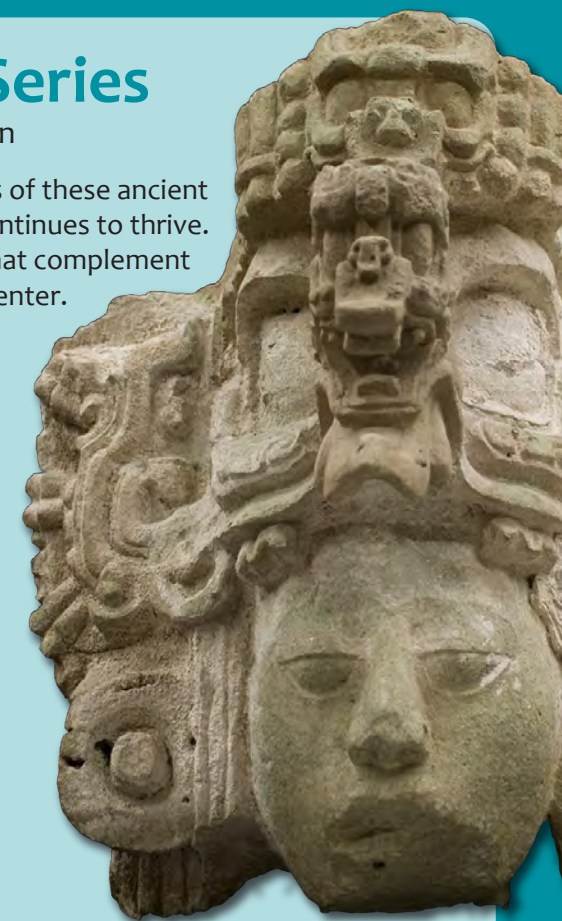
### Special Packages

Purchase all 5 Mind of the Maya presentations and receive a discounted rate.

Best Value: \$72

Student's Best Value: \$40

\* Please note that Meet the Maya on April 27 takes place before the exhibit opens. Exhibition admission will not be charged.



### Making a Living

June 15

Stelae and murals tell the stories of the elite, but what was life like for everyday men and women? Join renowned Mayanist Dr. Norman Hammond, Professor Emeritus of Archaeology at Boston University, for a special presentation about Maya lifeways.

### Master Builders

July 20

Dr. Arlen Chase from University of Central Florida, whose groundbreaking work on the Maya is featured in the exhibit, architectural historian Edward Burian and visual archaeologist Leah McCurdy take in depth look at the work of these ancient architects.

### Maya Today

August 17

The world of the ancient Maya may be obscured by time and the mystery of its symbols, but the Maya maintain a vibrant culture that both honors their heritage and evolves within the modern world. Dr. Jennifer Mathews of Trinity University and Dr. Bryan Bayles, Witte Curator of Anthropology and Health invite you to discover the world of the Maya through the historic and contemporary periods.

Save the Date and take part in the first event for the  
Opening Day of *Maya: Hidden Worlds Revealed*

## 5th Annual Witte Museum Boot Scoot and 5K Run Saturday, May 14, 2016 – 8:00 a.m.

This family friendly, chip-timed 5K run/walk begins and ends at the beautiful Witte Museum campus, winding through beautiful Brackenridge Park, featuring a 1K for the littlest runners. This year, the Boot Scoot will be first event during a special day of opening activities for the Mays Family Center and its first blockbuster exhibition, *Maya: Hidden Worlds Revealed*.

Find updates online at [www.WitteMuseum.org](http://www.WitteMuseum.org)

Sponsorship opportunities are available.  
For questions about sponsorship or race registration,  
please call Lauren Smith, Fundraising Events Coordinator at  
210.357.1905 or email [LaurenSmith@WitteMuseum.org](mailto:LaurenSmith@WitteMuseum.org)

### Members' Sneak Preview Day

Friday, May 13, 2016

10 a.m. - 5 p.m.

Free Admission into exhibit!

### Opening Weekend

Saturday, May 14, 2016

& Sunday May 15, 2016

Members receive free admission  
during regular museum hours.

Visit [www.WitteMuseum.org](http://www.WitteMuseum.org) for more information.



**Mapping Texas:  
From Frontier to the Lone Star State**

April 29 - September 5, 2016  
Russell Hill Rogers Texas Art Gallery  
Included with museum admission



Mexico, California and Texas  
Published London, Edinburgh & Dublin, 1851  
Courtesy of the Texas General Land Office

Explore a stunning collection of rare Texas maps from the collections of the Texas General Land Office, the Witte Museum and the private collection of Carol and Frank Holcomb. See four of the original maps used by Stephen F. Austin for his colony in what was then Mexico, as well as a selection of rare maps dating from the 1600s to the late 1800s that reveal the shifting boundaries of Texas that affected all maps of the United States and Mexico. The exhibition also features important artifacts and documents relating to and complementing these significant maps.

NEW WITTE



The Witte welcomes  
**Helen Holdsworth**  
as the new  
Curator of Texas Wild.

As construction pushes forward at the New Witte, our content team is working hard developing exciting exhibits for the space. Helen Holdsworth, Curator of Texas Wild, is acquiring new taxidermy of native animals from throughout Texas for the expanded and enhanced McLean Family Texas Wild Gallery including a Desert Bighorn sheep, a Coati mundi, a 12 point white tail deer, a spotted skunk, an American alligator and a pair of Montezuma quail.



Dr. Thomas Adams, curator of paleontology and geology, is leading the team putting together the new Naylor Family Dinosaur Gallery, the Witte's first permanent Dinosaur Gallery. He recently acquired a cast of the skull of *Deinosuchus*, a giant Cretaceous crocodile found in the Big Bend area of Texas. Although not a dinosaur, *Deinosuchus* was an apex predator capable of eating large dinosaurs.



Mark your calendars for the Spring of 2017  
to see the new McLean Family Texas Wild Gallery,  
Naylor Family Dinosaur Gallery and the  
Kittie West Nelson Ferguson People of the Pecos Gallery  
in the New Witte!



Experience the Witte Museum after hours in an evening exclusively for adults (21 and older) which mixes cocktails, conversation and innovative museum culture. These special nights showcase unique experiences and include complimentary beer or wine with food available for purchase. Leave the kids at home and meet friends or bring a date!

6:30 - 8:30 p.m.

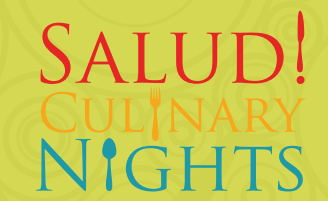
For more information or to purchase tickets visit [www.WitteMuseum.org](http://www.WitteMuseum.org) or call 210.357.1910.

**January 27 - The Human Body**  
Start the New Year off on the right foot (or the left) by exploring the *Bodies Revealed* exhibition. January's Cocktails and Culture offers special pricing\* for this blockbuster exhibit which closes January 31st, and invites guests to see the human body's inner beauty in educational and awe-inspiring ways. After you experience *Bodies Revealed*, head over to the H-E-B Body Adventure and discover your Super You! Take a virtual bike ride along the San Antonio River, unwind on the rooftop with a cocktail and enjoy the scenic views of Brackenridge Park.

\*Special pricing - \$15 per person, includes admission to the *Bodies Revealed* exhibit.

**February 24 - Saddle Up!**  
Saddle up and mosey over for a journey through the untamed land of South Texas! Explore the Robert J. and Helen C. Kleberg South Texas Heritage Center, home of the Witte Museum's collections tracing the legendary history of South Texas. Join us as we enjoy campfire stories on the banks of the San Antonio River and hear the tall tales of those who lived on the land as you meet vaqueros, cowboys and Tejano freighters.

\$12 per person or two reservations for \$20



Gather your friends or plan a date night and join the Witte for a tasty and interactive evening for adults featuring local chefs and a diverse array of cuisines and topics. Cooking demonstrations for each program spotlight culturally and seasonally themed menu items. Meet top local chefs, farmers, ranchers and food historians in an intimate setting as they present information, history and stories about the selected menu. Each program will also feature a wine, beer or spirit pairing from the finest Texas winemakers, brewers and mixologists.

Classes are 6:30 - 8:30 p.m. and are limited to only 60 guests per evening.

Tickets start at \$50 per person, \$45 for members and include a souvenir wine glass.

For more information, please call Witte Reservations at 210.357.1910.

Save the Date:  
January 13 - Chef Josef Davila with O'live  
February 10 - Xocolatl, Part 2



**Battle of Flowers 91st Annual Oratorical Contest  
FACES OF TEXAS INDEPENDENCE**  
Friday, February 26 | Preliminaries at 9 a.m.; Finals at 1 p.m.



The official seal of the Battle of Flowers Association features ribbons with the words, "Alamo," "Goliad" and "San Jacinto." But who were the extraordinary people who engaged in these battles that changed the course of history forever? The mission of the Battle of Flowers Association is "teaching the history of our state and keeping alive the patriotic traditions of Texas and San Antonio." In accordance with that mission, the topic of the 2016 contest asks us to reflect upon those storied individuals in whose honor this historic women's association was first founded.

Contestants representing many Texas colleges will deliver speeches from memory for prizes starting at \$3,000. Mark your calendars for this popular event. Admission is free but seating is limited. Visit the website at [www.BattleOfFlowers.org](http://www.BattleOfFlowers.org) or Facebook page at BattleOfFlowersOratorical for more information.





Presented by

**WELLS FARGO**

The 45th Annual Witte Game Dinner welcomed more than 1,700 guests and raised \$667,000! The event is the museum's largest fundraiser and funds essential educational programs, operations and exhibitions.



The City of San Antonio was recognized as the 2015 Game Dinner Honoree. As a city-owned facility, the Witte is grateful for 89 years of public-private partnership with the city. Recently the Mayor, City Manager and city officials made an impressive investment in the Witte Museum that will not only improve this public asset, but will also grow the educational and cultural opportunities available to our community and bring in millions of visitors to the city and millions of dollars in economic impact. Thank you Mayor Ivy Taylor, City Manager Sheryl Sculley, City Council members and city staff for designating our beloved Witte Museum as a beacon of transformation along the San Antonio River and Broadway Corridor.

We would also like to recognize the 45th Annual Witte Game Dinner Chairs Ginny and Randy Cadwallader who, along with their committee, truly kept "Texas Wild". Randy, Ginny and the committee were successful early on and kept going tenaciously to achieve record breaking crowds so that we had to jump the river to accommodate during the construction!



The Witte Game Dinner is made possible through the generous sponsorship of these exceptional community partners:



The Witte Museum recognizes and appreciates these outstanding businesses and organizations for their contributions of services and support:

- |                          |                           |                                |
|--------------------------|---------------------------|--------------------------------|
| Accu-Print               | Fairmount Hotel           | Overstreet Photography         |
| Angel's Envy Bourbon     | H-E-B                     | Papa's Pilar Rum               |
| AT&T                     | The Gambrinus Company     | The RK Group                   |
| Bud Light / Silver Eagle | Illusions Rentals         | San Antonio Parks & Recreation |
| Distributors, L.P.       | Industrial Communications | Department                     |
| Cheesy Jane's            | JSAV                      | Suerte Tequila                 |
| Cinco Vodka              | KENS Television           | Texas Monthly                  |
|                          |                           | Waterloo Gin                   |

# 5<sup>TH</sup> ANNUAL TEXAS TRAILBLAZERS LUNCHEON

Scholarship Sponsor



**VALERO**  
ENERGY FOUNDATION

## JOIN US!

The Witte Museum, in partnership with *Texas Monthly*, invites you to a special luncheon celebrating Peggy and Lowry Mays for their unwavering commitment to the Witte Museum and to the San Antonio community.

Join event chairs Tracee and J.J. Feik for an event that will focus on the importance of all Texans becoming stewards of the land, water and sky of this great state.

April 14, 2016  
11:30 a.m. – 1:30 p.m.  
Mays Family Center for exhibitions and special events at the Witte Museum

Sponsorship opportunities available.  
Purchase tables for \$5,000, \$3,000 and \$2,000.  
Individual tickets available for \$150.



For more information and to purchase tickets, please contact Alexandra Barrett, Annual Fund Officer, at 210.357.1922 or via email: [AlexandraBarrett@WitteMuseum.org](mailto:AlexandraBarrett@WitteMuseum.org)

*All funds raised provide valuable support for the programs, exhibits and collections of the Witte Museum.*



## The Louis A. and Frances B. Wagner Series

Connect with curators, experts and fellow community members through enriching presentations that complement the exhibits and allow you to deepen your knowledge of history and science topics.

### Frank Reaugh: Pastel Poet of the Texas Plains

Thursday, February 11  
6:30 - 8:30 p.m.

Join us at the Witte for a special presentation of Frank Reaugh: Pastel Poet of the Texas Plains. A moving documentary by Marla Fields, the film explores the life and work of Reaugh (pronounced "Ray"), Texas' foremost "landscape and cattle painter" and a great teacher and mentor to young artists across the Southwest. Several of Reaugh's works are featured in the Witte collection, and the museum is thrilled to host the film's third Texas screening, and the first in San Antonio. Experience the works of this great Texas painter and participate in art-making activities that honor Reaugh's legacy.

*This program is generously sponsored by Vogt Auction.*

Suggested donation for the Wagner Series is \$5 for members and students, \$10 for adults. Reservations required. Please call 210.357.1910 for reservations.

### Keep it in the Family: Preserving Personal Archival Materials

Wednesday, February 17  
6:30 - 8:30 p.m.

Do you have an attic full of old photos, handwritten letters or news clippings? Precious items like this are part of your family's story. How can you ensure their survival for generations to come? Join Witte Archivist and Librarian Melissa Gonzales and special guest experts to learn the basics of preserving archival materials and how you can apply them to your own documents and photos. Find inspiration in the original Witte exhibit *The Wests of Texas* as curator Bruce Shackelford and researcher Katherine Nelson Hall share their knowledge and experience with historical and genealogical research.

Bring one or two items that you would like to learn how to preserve and receive advice from the experts.

Suggested donation for the Wagner Series is \$5 for members and students, \$10 for adults. Reservations required. Please call 210.357.1910 for reservations.

*The Louis A. and Frances B. Wagner Series is generously supported by the Louis A. and Frances B. Wagner Lecture Series Fund.*



### #FreeKnowledge #FreeTuesday Family Fun

We have expanded Free Tuesdays with enhanced educational opportunities! Join us every Tuesday from 3-8 p.m. for a different array of fun activities for the whole family! Meet TexRex, the Witte's newest mascot, drink hot chocolate by the campfire, sketch in one of the beautiful galleries and more!

Visit the Witte's Facebook page for more information about each Tuesday and join the fun on social media with **#FreeKnowledge #FreeTuesday** and learn how you can **#SharetheKnowledge** and win a T-shirt!



### H-E-B Read Aloud

January 19, February 16, March 15 and April 19  
3:30 - 5:30 p.m.

Join H-E-Buddy and San Antonio Youth Literacy for a Read 3 Read Aloud and receive a free children's book!

Free Tuesdays are generously supported by Bolner's Fiesta Products, Inc., BBVA Compass, Macy's, and NFA Wealth Management.

# SATURDAY FAMILY DAYS



Fun-filled Saturday afternoons at the Witte are where you want to be this winter! Explore, discover, ask and learn from curators, historians and scientists.



Family Days are included with general admission  
Noon-4 p.m.



Full Body Saturday  
**New Year, New You!**  
January 16

A healthy balance is good for your body at any age! Step, jump, dance, ride, eat, relax and breathe your way through the H-E-B Body Adventure Powered by University Health System, and join our community partners for a special family day full of activities that will start your year off on the right foot.



STEM Saturday  
**Build It! sponsored by Time Warner Cable Connect A Million Minds**  
February 27

Design, crank, explode, imagine, create! It's time to celebrate National Engineers Week with the Witte. Put on your creative thinking caps and join us for an afternoon full of robots, legos, rockets, wires and more! Ignite your inner Engineer! #BuildIt!



STEM Saturday  
**World Water Day!**  
March 26

Dive into World Water Day at the Witte! Celebrate the Earth's most important resource and discover all the ways water touches our daily lives. Explore the San Antonio River, the lifeblood of the region, and experience the health benefits of water as a hydrating drink and a medium for relaxation and meditation. #WorldWaterDay

Join us at 2 p.m. for a special World Water Day premiere of the film *Dispatches from the Gulf* before it hits national airwaves as part of the acclaimed PBS series, *Journey to Planet Earth*. This documentary explores the impact of the 2010 Deep Water Horizon disaster on marine and human life in the Gulf Coast region.



Time Travel Saturday  
**Splendor on the Range: American Indians and the Horse**  
April 9

Immerse yourself in the culture of the American Indian. Taste the food, try your hand at intricate bead work, enjoy music and dancing and much more! Don't miss a rare opportunity to see artifacts never put on exhibition that chronicle the lifeways and history of American Indians. #Splendor

*STEM Saturdays are generously supported by The Boeing Company.*

*Family Days are generously supported by the City of San Antonio Department for Culture and Creative Development.*

### The Children's Hospital of San Antonio™ Demonstration Kitchen presents:

#### Healthy Holidays Kitchen Demonstrations

11 a.m., 12 p.m., 1 p.m. and 2 p.m.  
Sample tasty and healthy alternatives to your favorite holiday treats in the Children's Hospital of San Antonio Demonstration Kitchen! Free with Museum Admission!

Join us on the following Saturdays to sample yummy snacks:

January 16 - Healthy New Year!  
February 13 - Valentine Variety  
March 12 - It's Easy Being Green  
April 16 - Spring Delights

#### Super Chefs

2 p.m.  
Become a star chef in the Children's Hospital of San Antonio Demonstration Kitchen! Create easy, yummy, and healthy recipes to enjoy with your families! Free with Museum Admission!

Join us and become a Super Chef on the following days:

February 6 - Heroic Hero  
March 5 - Power Salad  
May 7 - Strong Smoothie

Show off your new culinary skills as you and your team create and plate your own delicious creations!





# WITTE MUSEUM **Camp**

for children in grades 3-5

## Spring Break Sessions

Monday, March 14 - Friday, March 18

Enjoy two new options for Witte Museum Camps this spring. Spend your mornings in the kitchen and your afternoons on the range! Join us for morning or afternoon sessions only, or for the entire day.

**For details and reservations, please call 210.357.1910.**

A week of half-day camp is \$180 for members and \$230 for non-members.

A week of full days, including both camps, is \$230 for members and \$280 for non-members.



### **Kids in the Kitchen** 9 a.m. – Noon

Let's get cooking! In the Children's Hospital of San Antonio™ Demonstration Kitchen, you will cook up your very own tasty and healthy kitchen creations. Learn tricks of the trade from guest chefs and experts, explore the H-E-B Body Adventure Container Garden, present your very own recipe, and more! Discover how making healthy choices can lead to a super you!

#### **Monday: Garden Grow**

Explore the H-E-B Body Adventure Container Gardens to discover what foods are in season. Practice techniques for starting your own container garden.

#### **Tuesday: Measure Up**

What happens when you add too much salt or not enough sugar? Find out how to balance just the right amount of ingredients to make your recipes delicious every time.

#### **Wednesday: Pair it Up**

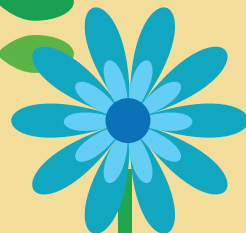
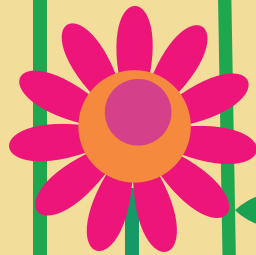
How does your nose help you taste? Why do we eat certain foods together? Discover the science of your senses and how to combine flavors for tasty, nutritious results.

#### **Thursday: Delicious Designs**

What does your perfect recipe taste like? Work with a group to plan and design your own delicious recipe.

#### **Friday: Serve it Up**

Show off your new culinary skills as you and your team create and plate your own delicious creations!



## Splendor on the Range:

American Indians and the Horse



### **Splendor on the Range**

1 – 5 p.m.

#### **Monday: Before the Horse**

What was life like for American Indians before the horse was re-introduced to the Americas? Explore lifeways and artifacts from wanderers and villages across what became the United States. Create a stone tool that will help you survive the rest of the week!

#### **Tuesday: Return of the Horse**

A total of 17 horses were brought to the island of Hispaniola 500 years ago. How did the horse change life for American Indians? Get up close to a real horse and imagine what it would be like seeing one for the first time!

#### **Wednesday: Life on the Move**

American Indians often moved from camp to camp following herds of animals. Their tipis and wickiups were made to be temporary or easily broken down and moved. Investigate the amazing technology of their everyday tools, then get your hands dirty and learn how to tan an actual animal hide that you can take home at the end of the week!

#### **Thursday: Everyday Splendor**

Creating the amazing leather goods made by American Indians takes time. Continue working your tanned hide so that you can prepare it for painting Friday. Explore up close artifacts made by Comanche, Apache and Cheyenne that have never been displayed before at the Witte!

#### **Friday: All the Pretty Horses**

As the sun set on the "days of the horse" the lives of American Indians changed drastically. Take a closer look at how Hollywood created American Indian myths through television and movies. Finish up the afternoon by painting and beading your animal skin for a one-of-a-kind Witte Museum Camp souvenir.

## Mark Your Calendars for Summer Fun at the Witte Museum!

**Witte Museum Camp: Summer with Maya**  
Grades 3-8

Meet Maya archaeologists, and work with engineers to understand the Master Builders of long ago! Try your hand at Maya math, and look at the skies through eyes of Maya astronomers! All this and much more! Experience the Maya this summer!

Save your spot for this unique week – only at the Witte!  
Grades: 3-4 June 13 – 17 and July 11 – 15  
Grades: 5-6 June 20 – 24 and July 18 – 22  
Grades: 7-8 June 27 – July 1 and July 25 – 29

For more information call 210.357.1910 today!







Curator of Anthropology and Health, Dr. Bryan Bayles accepted a special 'Thank You' in December from the City of San Antonio Mayor's Fitness Council on behalf of the Witte Museum for its cutting-edge commitment to health and wellness. You can join our movement to make San Antonio the healthiest city in America. Bring your family to the Witte's one-of-a-kind exhibition, H-E-B Body Adventure Powered by University Health System.



The Witte Museum is taking its groundbreaking model of transformative health and wellness to a national stage!

President and CEO Marise McDermott and Curator of Anthropology and Health Dr. Bryan Bayles have been invited to lead a panel at the American Alliance of Museum 2016 Annual Meeting and MuseumExpo in Washington DC, May 26-29, to discuss the tremendous success of the Witte's H-E-B Body Adventure Powered by University Health System.

The Witte Team includes key partners on this project: Dr. Anil Mangla, Assistant Director of Health of San Antonio Metro Health Department; Kate Rogers, Vice President, Communication and Engagement at H-E-B; and Jeff Kennedy, President of Jeff Kennedy and Associates, Inc. In a session entitled "Do the Impossible: Transforming with Civic Engagement and Data," this expert panel will share the story about how the Witte is now generating unprecedented metrics for physical activity, nutrition and health behavior on a scale never before available to help guide community-wide strategic planning. Through sweeping collaborative partnerships which include the region's largest food retailer, City and County governments, hospitals and clinical systems, health insurers, businesses, schools and foundations, the Witte has created a bold, national model to ignite health behavior changes across the country.

## MAYS FAMILY CENTER Topping Off Party



The Witte is proud to announce that on the evening of December 9, 2015, capitol campaign donors and Quillin Society members celebrated an important milestone in construction of the Mays Family Center for exhibitions and special events with a "Topping Off Party." This monumental occasion is rooted in ancient Viking tradition in which an evergreen tree is placed atop a new building to wish good luck for the completion of the project. David Lake of Lake|Flato Architects proudly shared the architectural process for the New Witte expansion as donors enjoyed food and cocktails in the Mays Family Center. The Witte would like to thank Peggy and Lowry May, and Kathy and Bill Johnson for their leap of faith and continued leadership in the Witte Museum.

For more information about how to get involved with the New Witte, please contact Elizabeth Higgins, Capital Campaign Officer at 210.357.1888.



Photos courtesy of Overstreet Photography



### WITTE BIRTHDAY PARTY SPECTACULAR

Daytime Parties (starts at \$210 for Members/\$285 for Non-Members)  
Come celebrate your child's Birthday Party at the Witte Museum and let their imagination soar!

### H-E-B BODY ADVENTURE: MINI CHEFS AFTER-HOURS BIRTHDAY PARTY

Exclusive After-Hours Party Package (starts at \$500)

With a dash of laughter and a sprinkle of fun we are cooking up a recipe for a yummy good time! Children will take their celebration to the next level when they roll up their sleeves in the kitchen!



To verify availability of a specific date or for more information, please call 210.357.1866





## Texas-sized Costume Party!

Save the date for **Night at the Museum**, the Witte Society's membership kick-off party on **Friday, January 29 from 7:30-10:30 p.m.!** Dress in Texas-sized costumes with a Witte twist! Come as your favorite dinosaur, Fiesta Duchess, Texas hero or get creative. There will be prizes for best dressed! 21 and older only.

## Join the Witte Society!

The Witte Society is a vibrant membership group that has a variety of affairs four times a year.

Become a member and join us for cocktail parties, family picnics, networking breakfasts and so much more! Members receive all the benefits of being a Witte Museum member, as well as discounted reservations to the Witte Game Dinner.



## Soar with Us

Members of the Quillin Society recently enjoyed President's Dinner, a black-tie thank you dinner for Witte Museum donors. The evening began with a celebratory toast for new Quillin members and a private viewing of *The Wests of Texas* exhibit, followed by a luxe seated dinner generously provided by the RK Group.



The Quillin Society is a dynamic and growing group of committed patrons with a passion for the history and ecology of South Texas. Generous annual gifts provide critical support for the education, research and public programs of the Witte Museum.



For more information on the Quillin Society or to set up a payment plan, please contact Alexandra Barrett, Annual Fund Officer, at 210.357.1922 or via email: [AlexandraBarrett@WitteMuseum.org](mailto:AlexandraBarrett@WitteMuseum.org).

## Team Member Spotlight



**Shenna Hayden**  
Director of Public Programs

### How long have you worked at the Witte Museum?

It will be 8 years this April. I started out as a Part-Time Program Presenter working with students visiting on field trips. I have been given the wonderful opportunity to advance my museum professional career here at the Witte and plan to be a part of the team for many years. The Witte is home!

### What is your favorite part of your job?

The best part of my job is that it is always different. I have the privilege of working with students, families and adults on a daily basis, guiding them through thought provoking programming in South Texas Heritage, Science and Natural History. It is truly a joy to create a program and then see visitors participating, enjoying and learning from the program!

### What about the New Witte transformation are you most excited for?

I guess I can't say all of it?! I am so excited for all of the new programming possibilities we will be able to offer our students and families. New Witte will have 5 lab spaces dedicated to hands-on, immersive learning. I know these labs are going to be super popular with our visitors and will not only be fun, but also really cement their knowledge about Texas Deep Time and the environment in which we live.

### Why is the Witte important to you?

I grew up in a farming and ranching family and on the back of a horse. I started barrel racing competitively at 7 and calf roping at 9. I also rode a bull once, trying to win "All-Around Cowgirl" but was thrown off after 3 seconds! I am also very passionate about the archaeology of the Lower Pecos. My job at the Witte has provided me the amazing opportunity to get involved with the Rock Art Foundation where I serve as a volunteer guide to Rock Art sites in Southwest Texas. Being able to share my passion and knowledge about the People of the Pecos in what was their environment is something that feeds my soul. Come out to the Witte Museum and see me!

## JANUARY

January 13, 6:30 - 8:30 p.m.  
**Salud! Culinary Nights**  
H-E-B Body Adventure  
\$45 members, \$50 non-members  
Includes souvenir wine glass  
Call 210.357.1910 for reservations

January 16, Noon-4 p.m.  
**Full Body Saturday**  
**New Year, New You!**  
Witte Campus  
Included with museum admission

January 16, 11 a.m., Noon, 1 & 2 p.m.  
**Healthy Holiday Kitchen Demonstrations**  
**Healthy New Year!**  
H-E-B Body Adventure  
Included with museum admission

January 19, 3:30-5:30 p.m.  
**H-E-B Read Aloud**  
Witte Campus

January 27, 6:30 - 8:30 p.m.  
**Cocktails & Culture**  
**The Human Body**  
\$15 per person, includes admission to *Bodies Revealed*  
Call 210.357.1910 for reservations

January 29, 7:30-10:30 p.m.  
**Witte Society Membership Party**  
**Night at the Museum**  
For more information call 210.357.1922 or email [AlexandraBarrett@WitteMuseum.org](mailto:AlexandraBarrett@WitteMuseum.org)

## FEBRUARY

February 6, 2 p.m.  
**Super Chefs Kitchen Demonstrations**  
**Heroic Hero**  
H-E-B Body Adventure  
Included with museum admission

February 10, 6:30 - 8:30 p.m.  
**Salud! Culinary Nights**  
H-E-B Body Adventure  
\$45 members, \$50 non-members  
Includes souvenir wine glass  
Call 210.357.1910 for reservations

February 11, 6:30-8:30 p.m.  
**Louis A. and Frances B. Wagner Series**  
**Frank Reaugh: Pastel Poet of the Texas Plains**  
Suggested donation \$5 members and students  
\$10 adults  
Call 210.357.1910 for reservations

February 13, 11 a.m., Noon, 1 & 2 p.m.  
**Healthy Holiday Kitchen Demonstrations**  
**Valentine Variety**  
H-E-B Body Adventure  
Included with museum admission

February 16, 3:30-5:30 p.m.  
**H-E-B Read Aloud**  
Witte Campus

February 17, 6:30-8:30 p.m.  
**Louis A. and Frances B. Wagner Series**  
**Keep it in the Family: Preserving Personal Archival Materials**  
Suggested donation \$5 members and students  
\$10 adults  
Call 210.357.1910 for reservations

February 24, 6:30 - 8:30 p.m.  
**Cocktails & Culture**  
**Saddle Up!**  
\$12 per person or two reservations for \$20  
Call 210.357.1910 for reservations

February 27, Noon - 4 p.m.  
**STEM Saturday**  
**Build It!**  
Witte Campus  
Included with museum admission

## MARCH

March 5 - August 21, 2016  
**Splendor on the Range:**  
**American Indians and the Horse**  
Kathleen and Curtis Gunn Gallery  
\$3 members, \$5 non-members,  
plus general admission

March 5-6  
**Splendor on the Range**  
**Members Opening Weekend**  
Members enjoy FREE admission to exhibit

March 5, 10 a.m. - Noon  
**Splendor on the Range**  
**Members Only Activities**  
Witte Campus

March 5, 2 p.m.  
**Super Chefs Kitchen Demonstrations**  
**Power Salad**  
H-E-B Body Adventure  
Included with museum admission

March 12, 11 a.m., Noon, 1 & 2 p.m.  
**Healthy Holiday Kitchen Demonstrations**  
**It's Easy Being Green**  
H-E-B Body Adventure  
Included with museum admission

March 14 - 18, 9 a.m. - Noon  
**Witte Museum Camp:**  
**Kids in the Kitchen**  
Per week of half-day: \$180/members;  
\$230/non-members  
Per week of full days: \$230/members;  
\$280 non-members  
Call 210.357.1910 for information

March 14 - 18, 1-5 p.m.  
**Witte Museum Camp:**  
**Splendor on the Range**  
Per week of half-day: \$180/members;  
\$230/non-members  
Per week of full days: \$230/members;  
\$280 non-members  
Call 210.357.1910 for information

March 15, 3:30-5:30 p.m.  
**H-E-B Read Aloud**  
Witte Campus

March 26, Noon - 4 p.m.  
**STEM Saturday**  
**World Water Day!**  
Witte Campus  
Included with museum admission

March 26, 2 p.m.  
**Dispatches from the Gulf Movie Screening**  
Witte Campus  
Included with museum admission

March 30, 6:30-8:30 p.m.  
**Louis A. and Frances B. Wagner Series**  
**The Fort Parker Raid Revisited**  
Suggested donation \$5 members and students  
\$10 adults  
Call 210.357.1910 for reservations

## CALENDAR OF EVENTS

## APRIL

April 9, Noon - 4 p.m.  
**Time Travel Saturday**  
**Splendor on the Range**  
Witte Campus  
Included with museum admission

April 14, 11:30 - 1:30 p.m.  
**5th Annual Texas Trailblazers Luncheon**  
Mays Family Center  
For more information call 210.357.1922 or email [AlexandraBarrett@WitteMuseum.org](mailto:AlexandraBarrett@WitteMuseum.org)

April 16, 11 a.m., Noon, 1 & 2 p.m.  
**Healthy Holiday Kitchen Demonstrations**  
**Spring Delights**  
H-E-B Body Adventure

April 19, 3:30-5:30 p.m.  
**H-E-B Read Aloud**  
Witte Campus

April 27, 6:30 - 8:30 p.m.  
**The Mind of the Maya Series**  
**Meet the Maya**  
Suggested donation \$5 members and students; \$10 adults  
Call 210.357.1910 for reservations

April 29 - September 5, 2016  
**Mapping Texas:**  
**From Frontier to the Lone Star State**  
Russell Hill Rogers Texas Art Gallery  
Included with museum admission



## WITTE MUSEUM STORE

Educational Items  
Rocks and Fossils  
Jewelry  
Books





3801 Broadway  
San Antonio, Texas 78209

**Contact Us**  
**General Information:**  
210.357.1900

**Group Reservations:**  
210.357.1910

**Event Rentals:**  
210.357.1866

**Membership:**  
210.357.1863

Keep up with everything  
happening at the Witte!

[www.WitteMuseum.org](http://www.WitteMuseum.org)



Find us on  
**Facebook**



**Instagram**



NON-PROFIT  
ORGANIZATION  
U.S. POSTAGE  
PAID  
PERMIT #1506  
S.A.T.X.

The Witte Museum's Public Programs are supported in part by grants from The Will Smith Charitable Foundation, the Tesoro Foundation, The Boeing Company, the Capital Group Companies Charitable Foundation, the William Knox Holt Foundation, and Rackspace Hosting. The South Texas Heritage Initiative is generously supported by Richard and Mary West Traylor, The Brown Foundation, Inc., Patrick Burns, and the William Knox Holt Foundation.

Scholarship support is provided by the Harvey E. Najim Family Foundation, the William Knox Holt Foundation, Rackspace Hosting, the Witte Society's Fund a Field Trip Campaign, Mr. and Mrs. Richard C. Traylor, Mr. and Mrs. A.R. Dooley, Jr., Rose Marie and John L. Hendry III, and History Heroes. H-E-B Body Adventure operations are generously supported by H-E-B and the Saint Susie Charitable Foundation. The Witte Museum also receives general operational support from the City of San Antonio Department for Culture and Creative Development, the Albert and Bessie Mae Kronkosky Charitable Foundation, the George and Fay Young Foundation, the USAA Foundation, the Edouard Foundation, the Bank of America Foundation, the Parker Foundation, the O'Conner & Hewitt Foundation, the George Weldon Sheffield Fund of the San Antonio Area Foundation, the Victor and Peggy Creighton Charitable Trust, the Carol Lee Jones Educational and Cultural Fund of the San Antonio Area Foundation, the Harris K. and Lois G. Oppenheimer Foundation, the Graham B. and Anne E. Knight Fund and the Orsinger Family Trust of the San Antonio Area Foundation, and the Edwin M. Jones Foundation, Inc. *Free Tuesdays* are generously supported by Bolner's Fiesta Products, Inc., BBVA Compass, Macy's, and NFA Wealth Management.

# Plan your next Meeting, Wedding or Gala at the Witte Museum

Your event at the Witte will be a unique, one-of-a-kind experience that you won't find anywhere else in San Antonio! The Witte Museum is a picturesque backdrop for corporate events. Perfect for luncheons or after-hour functions, the Witte has meeting and event spaces that accommodate groups of 10 up to 1,500 people.

Call today to book your event or to schedule a tour of our facilities at 210.357.1866 or visit us online at [www.WitteMuseum.org](http://www.WitteMuseum.org).



Photo Courtesy of  
Bend the Light Photography